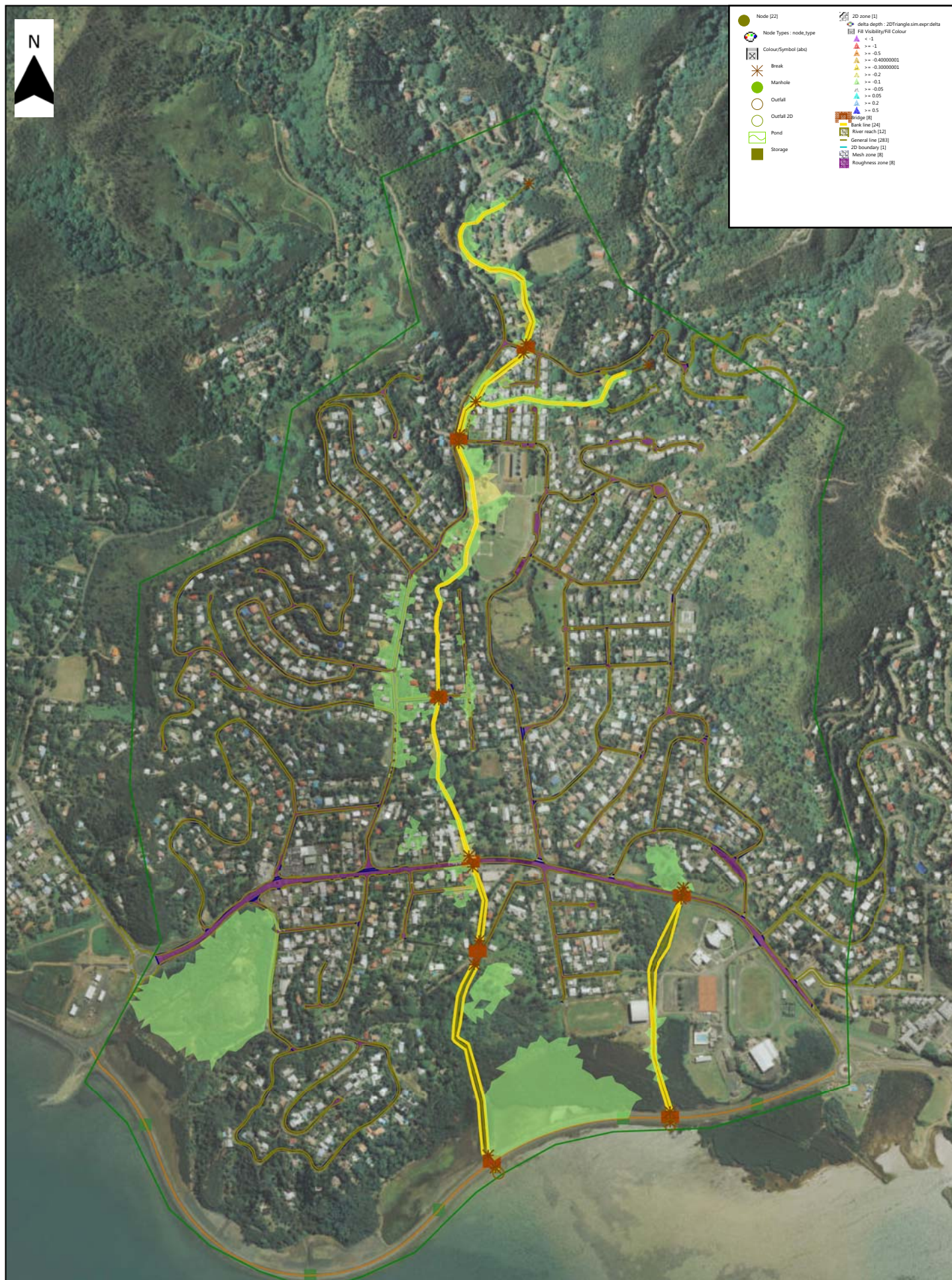


Geometrie : 14002\_V4 (version 4)  
Simulation : Oct2001\_ETL2015 Reference  
sensibilite>Rainfall\_2001\_Namie1

Etude hydraulique Creek Namié - Analyse de  
sensibilite aux coefficients de rugosité  
Reference - K-20% - Oct 2001

0 300  
m





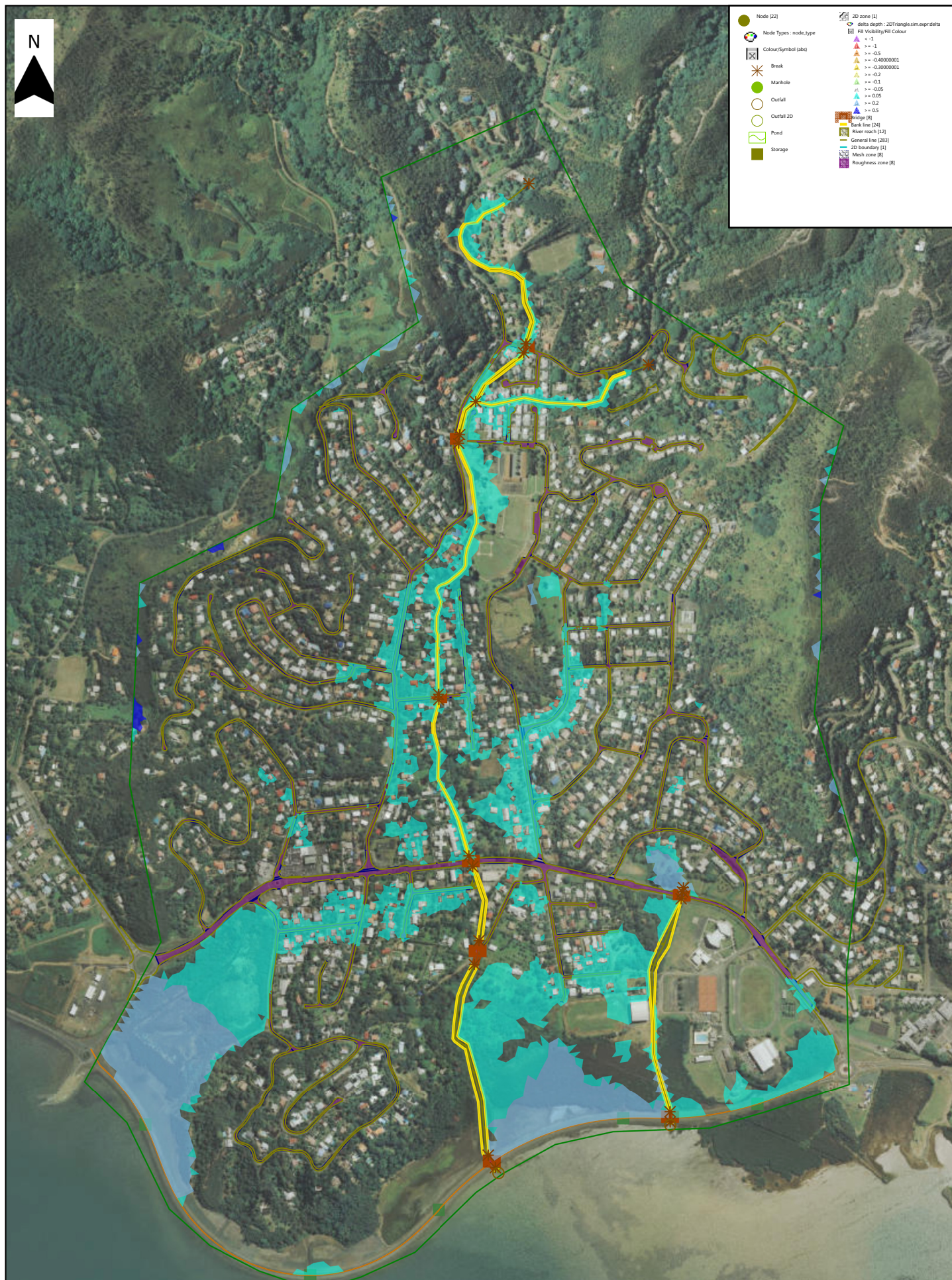
Geometrie : 14002\_V4 (version 4)  
Simulation : Oct2001\_ETL2015 Reference  
sensibilite>Rainfall\_2001\_Namie1

Etude hydraulique Creek Namié - Analyse de  
sensibilite aux coefficients de rugosité  
Reference - K-20% - Oct 2001

0 300  
m

Analyse de sensibilité aux coefficients de Strickler						
Profil	Abscisse	reference	K fort	K faible	delta Ref- K fort	delta Ref - K faible
		Niveau	Niveau	Niveau		
8	72	29.597	29.501	29.662	0.10	-0.06
7	449	22.491	22.36	22.555	0.13	-0.06
6.9	555	21.3	21.287	21.266	0.01	0.03
6.8	572	20.332	20.188	20.408	0.14	-0.08
6.7	731	18.117	18.041	18.159	0.08	-0.04
6.6	740	18.117	18.041	18.159	0.08	-0.04
5.9	820	16.89	16.957	16.917	-0.07	-0.03
5.8	841	16.273	16.073	16.417	0.20	-0.14
5	1084	13.668	13.539	13.765	0.13	-0.10
4	1466	9.302	9.364	9.304	-0.06	0.00
3.95.5	1471	9.321	9.397	9.333	-0.08	-0.01
3.9	1481	8.885	8.726	8.966	0.16	-0.08
3	1726	6.194	6.13	6.232	0.06	-0.04
2.1	1861	5.43	5.484	5.714	-0.05	-0.28
2	1888	4.813	4.675	4.903	0.14	-0.09
1.2	2064	3.634	3.56	3.665	0.07	-0.03
1.1	2121	3.425	3.334	3.479	0.09	-0.05
1	2199	2.97	2.928	2.985	0.04	-0.01
0.5	2590	1.458	1.619	1.331	-0.16	0.13
0.2	2623	0.759	0.887	0.728	-0.13	0.03
0.1	2630	0.725	0.731	0.725	-0.01	0.00



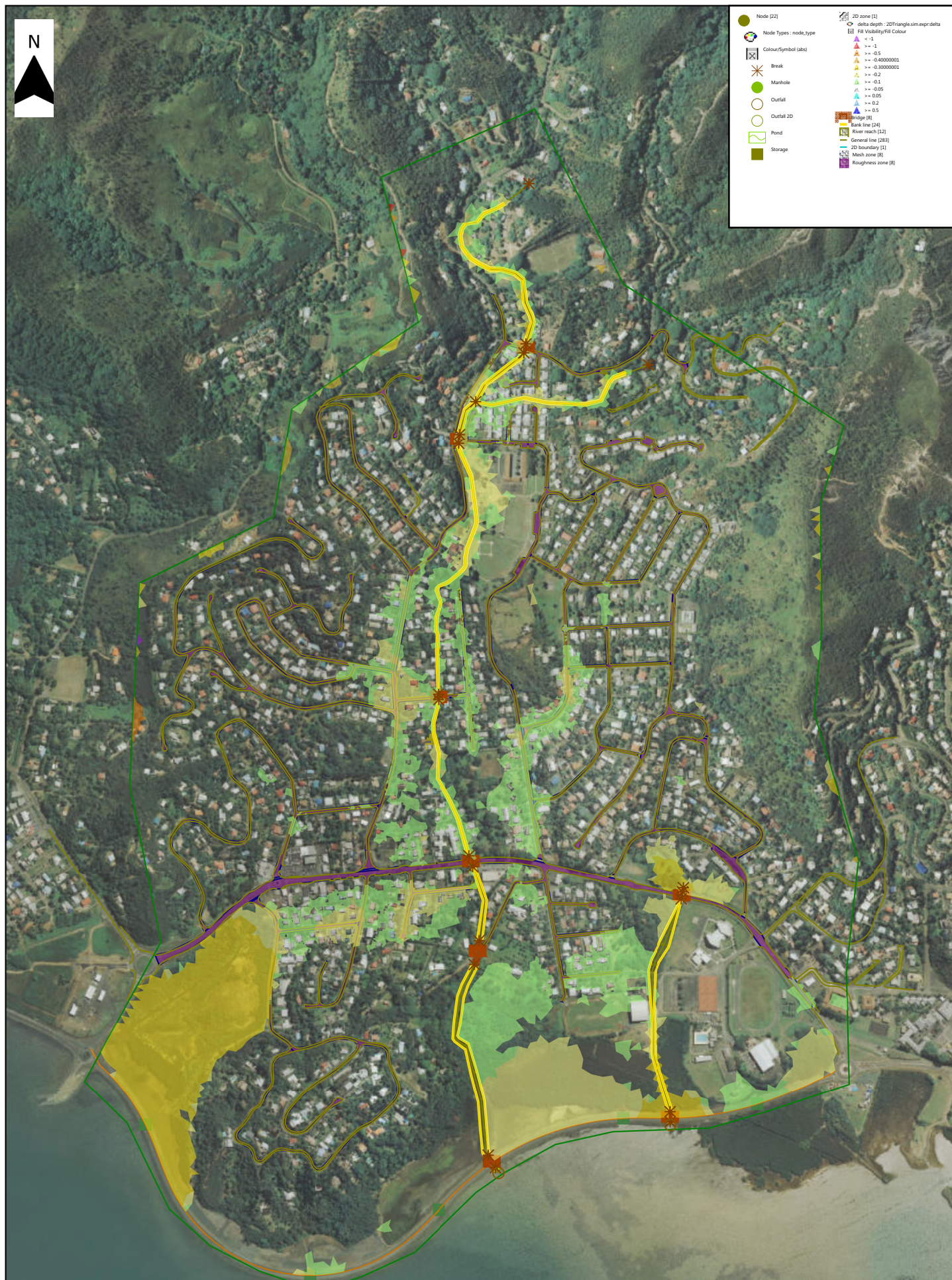


Geometrie : 14002\_V4 (version 4)  
Simulation : Oct2001\_ETL2015 Reference  
sensibilite>Rainfall\_2001\_Namie1

Etude hydraulique Creek Namié - Analyse de  
sensibilite aux variations de débit  
Reference - Q-20% - Oct 2001

0 300  
m





Geomerie : 14002\_V4 (version 4)  
 Simulation : Oct2001\_ETL2015 Reference  
 sensibilite>Rainfall\_2001\_Namie1

Etude hydraulique Creek Namié - Analyse de  
 sensibilité aux variations de débit  
 Reference - Q+20% - Oct 2001

0 300  
 m



Analyse de sensibilité aux variations de débit						
Profil	Abscisse	reference	Q+20%	Q-20%	delta Ref- Q+20%	delta Ref - Q-20%
		Niveau	Niveau	Niveau		
8	72	29.597	29.733	29.463	-0.14	0.13
7	449	22.491	22.564	22.36	-0.07	0.13
6.9	555	21.3	21.377	21.156	-0.08	0.14
6.8	572	20.332	20.407	20.218	-0.07	0.11
6.7	731	18.117	18.194	18.021	-0.08	0.10
6.6	740	18.117	18.194	18.021	-0.08	0.10
5.9	820	16.89	17.018	16.687	-0.13	0.20
5.8	841	16.273	16.396	16.114	-0.12	0.16
5	1084	13.668	13.791	13.524	-0.12	0.14
4	1466	9.302	9.354	9.24	-0.05	0.06
3.95.5	1471	9.321	9.387	9.245	-0.07	0.08
3.9	1481	8.885	8.946	8.821	-0.06	0.06
3	1726	6.194	6.275	6.102	-0.08	0.09
2.1	1861	5.43	5.538	5.29	-0.11	0.14
2	1888	4.813	4.886	4.722	-0.07	0.09
1.2	2064	3.634	3.71	3.544	-0.08	0.09
1.1	2121	3.425	3.473	3.367	-0.05	0.06
1	2199	2.97	2.995	2.936	-0.02	0.03
0.5	2590	1.458	1.469	1.441	-0.01	0.02
0.2	2623	0.759	0.765	0.749	-0.01	0.01
0.1	2630	0.725	0.725	0.725	0.00	0.00